

# ER6-1400

**EFORT**

**ER6-1400,**  
Maxium payload 6 kg with maxium reach 1433 mm.

■ **Highlights**

A comprehensive arc welding process software can be integrated to meet the requirements of automatic welding in various scenarios;  
Available version for the education industry with disassembly possibility to meet the education requirements with intelligent manufacturing focus.

■ **Applications**

It can be used in handling, machine tending, arc welding, etc.

■ **Industries**

Suitable for plastic, metal parts, education and other industries.

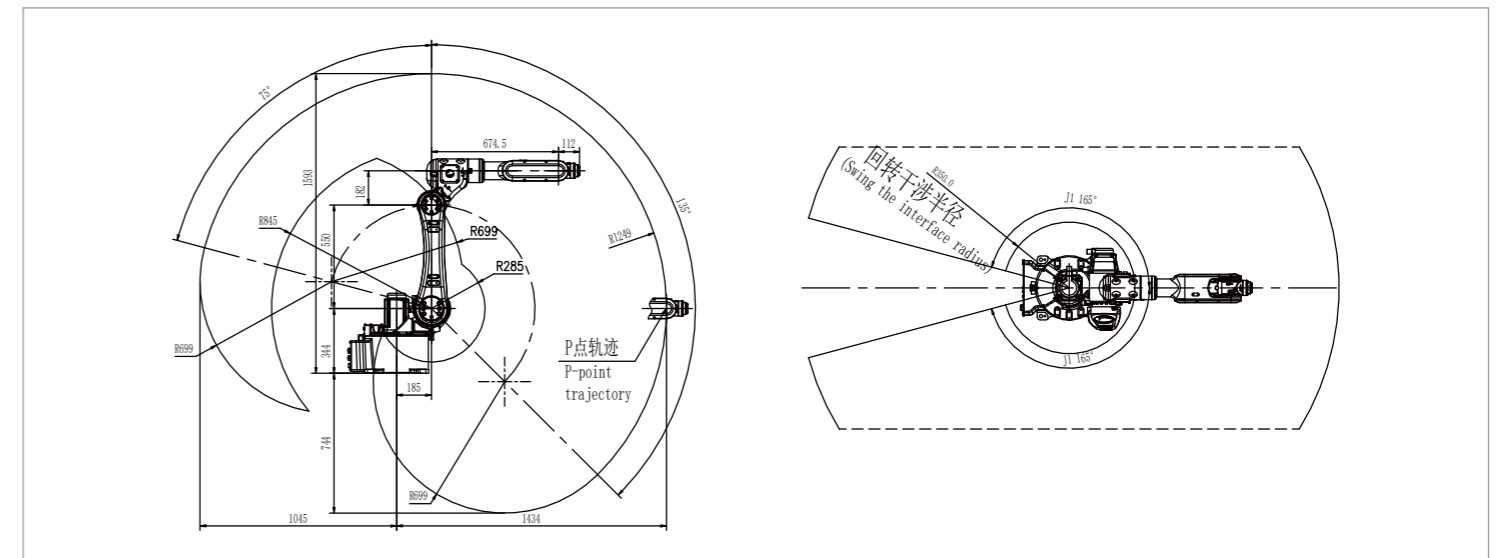


**SPECIFICATIONS**

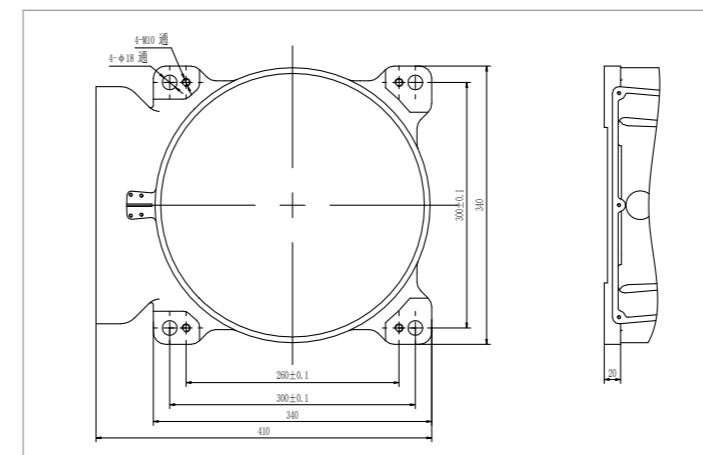
<b>Model</b>	ER6-1400	
<b>Type</b>	Articulated	
<b>Controlled axes</b>	6 Axes	
<b>Max. payload on wrist</b>	6 kg	
<b>Repeatability</b>	±0.05 mm	
<b>Robot weight</b>	145 kg	
<b>Reach</b>	1433 mm	
<b>Robot IP grade</b>	IP54 / IP67 (Wrist)	
<b>Cabinet IP grade</b>	IP54	
<b>Drive mode</b>	AC servo drive	
<b>Installation</b>	Floor, Upside-down, Wall, Angle	
<b>Installation enviroment</b>	<b>Ambient temperature</b>	0~45 °C
	<b>Ambient humidity</b>	RH≤80% (No dew nor frost allowed)
	<b>Vibration acceleration</b>	4.9 m/s <sup>2</sup> (<0.5 G)

<b>Allowable load moment at wrist</b>	<b>J4</b>	12 N·m
	<b>J5</b>	12 N·m
	<b>J6</b>	6 N·m
<b>Allowable load inertia at wrist</b>	<b>J4</b>	0.4 kg·m <sup>2</sup>
	<b>J5</b>	0.4 kg·m <sup>2</sup>
	<b>J6</b>	0.2 kg·m <sup>2</sup>
<b>Maximum speed</b>	<b>J1</b>	175°/sec
	<b>J2</b>	175°/sec
	<b>J3</b>	185°/sec
	<b>J4</b>	330°/sec
	<b>J5</b>	360°/sec
	<b>J6</b>	600°/sec
<b>Motion range</b>	<b>J1</b>	±165°
	<b>J2</b>	+75°-135°
	<b>J3</b>	+170°-83°
	<b>J4</b>	±180°
	<b>J5</b>	±130°
	<b>J6</b>	±360°

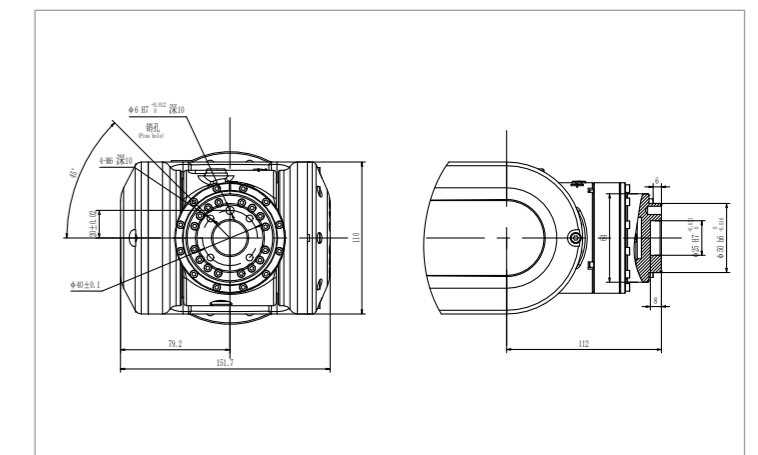
**OPERATING SPACE**



**BASE MOUNTING SIZE**



**END FLANGE MOUNTING SIZE**



**EFORT Intelligent Equipment Co., Ltd.**  
PHONE: (00 86) 400-052-8877  
ADDRESS: No.96 East Wanchun Road, China(Anhui) Pilot  
Free Trade Zone Wuhu Area, Wuhu, Anhui Province, China  
WWW.EFORT.COM.CN